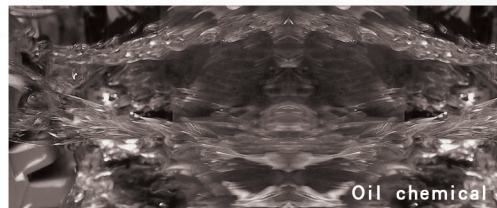


Automatic Refractometer

A650/A620/A610 Automatic Refractometer includes high-performance CCD light-sensitive part, can accurately and efficiently complete sample analysis tests through exclusive signal acquisition, analysis and processing technology. A650/A620/A610 can automatically measure the refractive index (nD) of transparent or translucent liquids and mass fraction (Brix) of sugar solution, is accurate, reliable, quick, easy for operation and so on.



Characteristics

- High-resolution CCD detector offers automatic measurement, avoiding personal errors, having higher accuracy.
- Extremely large storage capacity can store up to 1000 groups of data information automatically.
- Exclusive signal acquisition, analysis and processing technology ensures accurate measurement results.
- Large color touch screen display and innovative WINDOWS software interface give extremely convenient device operation and data acquisition.



Ultra long life light source

It adopt High brightness LED lights with service life exceeding 100000 hours, less time ready for use, save your cost and time.

Auto temperature control system

A650 adopts peltier temperature control system, make sure the whole testing with accuracy and constant temperature.

Perfect measuring prism

Measuring prism is made of high hardness sapphire glass, of excellent properties against corrosion and scratches, free for clean and durable.

Multiple data output interface

External USB and RS232 ports can be directly connected to PC, USB disk and SD card interfaces are easy for data export and backup.

Note: "•" with the same technical index; "—" without

Technical data:

	A650	A620	A610
Refractive index measuring range (nD)	1.3000-1.7000	•	•
Measured value error: (nD)	±0.0002	•	•
Measurement resolution (nD)	0.0001	•	•
Scope of sugar solution mass fraction (Brix)	0-95%	•	•
Measured value error (Brix)	±0.1%	•	•
Measurement resolution (Brix)	0.1%	•	•
Temperature control mode	Built-in semiconductor	Built-in flow cell	—
Scope of temperature display	0-50°C	•	•
Temperature resolution	0.1°C	•	•
Temperature control range	15°C-30°C	—	—
Temperature control accuracy	0.1°C	—	—
Interface	RS232/USB/SD card/ U disk	•	•
Data storage capacity	1,000 pieces;	•	•
Display modes	5.6 inches, TFT, touch screen	•	•
Power supply	220VAC±10%, 50Hz	•	•
Power	100w	50W	•
Net weight	12kg	10kg	10kg
Dimension	455mmx312mmx200mm		